



MRF
TYRES
Tyres with Muscle



MOTORSPORT TYRES
CATALOGUE 2026-2027
RACE & RALLY

MRF TYRES – INDIA'S NO. 1

MRF is the largest manufacturer of tyres in India. Established in 1946 and headquartered in Chennai, India, MRF exports tyres to over 90 countries. The company manufactures the widest range of automotive tyres.

MRF is India's leading Tyre Brand for close to 4 decades and the largest tyre manufacturer with an annual turnover of over US\$ 3 Billion. Globally, it ranks among the top 15 Tyre Companies Worldwide and amongst the Top 3 Strongest Brands in the World with manufacturing facilities spread across 10 locations in India .

MRF manufactures tyres for passenger cars, trucks, buses, agricultural tractors, two-wheelers, and off-road/ mining vehicles. The portfolio includes speciality products like aircraft tyres and retreading materials. MRF is the most awarded Brand of Tyres amongst Original Equipment Manufacturers in India with emphasis on new generation EVs in India.

MRF R&D operates from state- of- the art facilities which now includes an exclusive Tyre Testing Facility, the only tyre company in India to own and operate a tyre proving ground.

MRF has dominated motorsports for decades and has a deep involvement with cricket through the world famous MRF Pace Foundation in Chennai. MRF is a premium brand with high visibility and has leading cricket players as Brand Ambassadors.

The iconic MRF Muscleman logo remains synonymous with quality and performance cementing its status as a leading symbol of Trust all over the world.



Visit us at www.mrfmotorsports.com. For enquiries, please contact write2us@mrftyres.com or scan the QR code.



/MRFRacingOfficial |



/MRF_Racing |



/MRF_Racing



Mr. Arun Mammen,
Vice Chairman & Managing Director, MRF Ltd,
and FIA President **Mr. Mohammed Ben Sulayem**
with the 2022 ERC Championship trophy.



Mr Arun Mammen
Vice Chairman & Managing Director, MRF Ltd,
receiving the 2025 ERC Teams Championship Trophy
from **Mr. Manuel Avino**, Vice President, FIA Europe.

MRF TYRES – THE RACE TRACK IS OUR LABORATORY

Racing is a passion at MRF, we have been associated with all forms of motorsport – racing, rallying and motocross for over 4 decades. The race track is our laboratory and is an essential tool for tyre testing. Intensive data analysis is done at every race and rally and the inputs go straight back into making better tyres for customers which is why we stand by our brand promise:

The tyres we race are the tyres you buy

The MRF Rally Team has won 9 titles in the Asia Pacific Rally Championship (APRC), the only Indian tyre company to have achieved this singular honour. Team MRF has also won 3 European Rally Championship (ERC) Teams Titles in 2022, 2023 and 2025. Today, MRF Motorsport Tyres are used in several competitive events across the world.



RALLY TYRES

Tyres play an extremely important role in rallying. The right type of tyre can alter the complete dynamics of the vehicle. MRF rally tyres are specially engineered for maximum performance on very high-speed rally cars. Rally tyres are designed to achieve the fastest timings as well as consistent performance throughout the rally.

The asymmetric pattern of MRF rally tyres are designed to give sufficient traction and lateral grip. These tyres have been engineered for sustained high performance. The large tread blocks enhance handling and the curvilinear pattern provides effective lateral grip during cornering.

MRF rally tyres are constructed and reinforced using premium materials on the crown and the sidewalls to withstand a high degree of impact during rallying. Rally circuits consist of different terrains and most of the sections contain loose soil, pebbles, hard pack, mud, sharp objects, rocks etc. MRF tyres are engineered to withstand these tough conditions and ensure that the driver has complete control of the car.

MRF rally compounds are specifically formulated and designed for different applications, surfaces, temperatures and weather conditions. Compound selections have to be done by the rally team based on weather conditions and track temperatures during the rally.

GRAVEL RALLY TYRE PATTERNS



**PREMIUM
SEGMENT**

ZG4



Designed with an aggressive asymmetric and smooth curvilinear tread design engineered for consistent bite on surfaces from hard-packed dirt to loose gravel soil. It incorporates a strong carcass and advanced compound design that offers dependable performance across demanding terrain and high-speed impacts. Enhanced sidewall protection and optimized block stiffness ensure precise steering response and predictable handling, giving drivers confidence through challenging gravel stages.

ZG3



Asymmetric and smooth curvilinear pattern. Optimised for improved straight line traction and gradual increase of cornering forces. The inside pattern gives excellent performance during acceleration and braking while the outer curvilinear pattern gives enhanced lateral grip during cornering. Specifically designed for puncture resistance and cut resistance.

BLOCKS & GROOVE WIDTH:

Open pattern with smooth curvilinear groove to give the best performance on soft to loose gravel.

ZDM3



Asymmetric and laterally oriented pattern. Optimised for superior straight-line traction and cornering stability. The inside pattern gives excellent performance during acceleration and braking, while the lateral pattern gives high lateral grip during cornering.

BLOCKS & GROOVE WIDTH:

Open pattern, good for soft and loose gravel.

ZDM2



Asymmetric and laterally oriented pattern. Aggressive pattern optimised for superior straight-line traction and cornering stability. The inside pattern gives excellent performance during acceleration and braking, while the lateral pattern gives high lateral grip during cornering.

BLOCKS & GROOVE WIDTH:

Wider groove width and more open pattern to give the best performance on soft and very loose gravel.

ZWM2



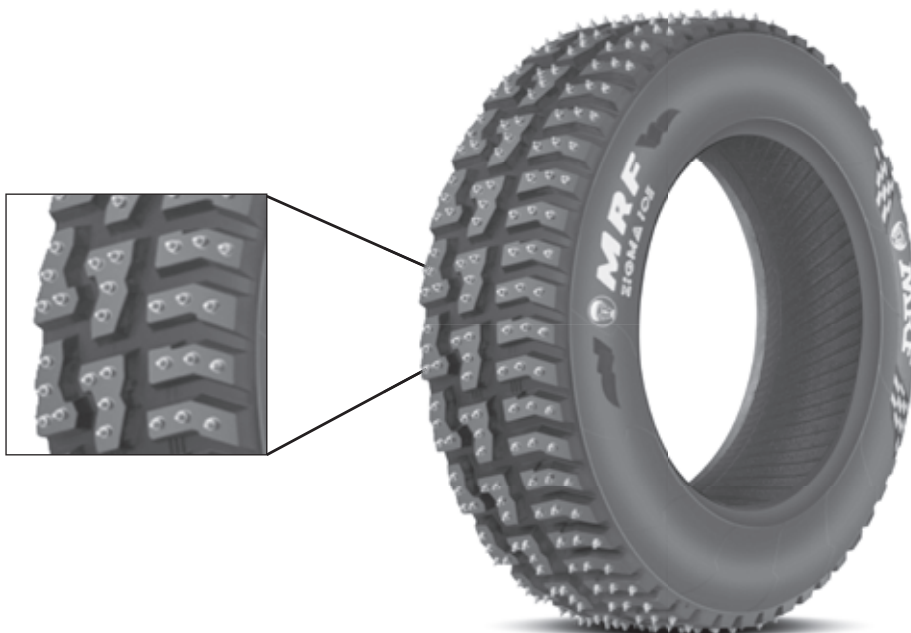
This pattern has been specifically designed for muddy soil. Large voids help in better traction. The orientation of the tread buttons gives extra grip on slushy terrain. Narrow tread width design helps in digging into muddy soil easily to give good traction.

ZVH1



Symmetric pattern which can fit on all four wheels. Integrated buttons and narrow-groove width pattern gives the best performance on hard packs with small pebbles and rough surfaces. Lesser tread depth to give more stability on very hard packs.

ZGI



MRF ZGI Ice Tyres are engineered with an aggressive studded tread pattern and specialized rubber compound resilient at extreme sub-zero temperatures, holding the studs in position on ice as well as high wearing frozen gravel surfaces. The ZGI features hundreds of precisely positioned tungsten carbide studs that bite through ice and compacted snow, providing exceptional traction during acceleration, braking, and cornering. Built with reinforced sidewalls and optimized tread depth to withstand the brutal impacts of rally stages while evacuating slush and maintaining contact with the racing line.

DRY TARMAC (ASPHALT) RALLY TYRE PATTERNS



ZTA



Designed for Asphalt / Tarmac Rally applications. Complies with latest FIA regulations. The specially designed asymmetric pattern, superior construction & compounds deliver better handling and traction in both dry and wet conditions.

ZTA PLUS A1

**PREMIUM
SEGMENT**



Engineered with an asymmetric tread design that provides strong traction, stability, and responsive handling on asphalt surfaces, and homologated by FIA. An advanced compound design enhances grip, braking performance and delivers consistent control in dry and damp tarmac conditions. Built with motorsport-grade construction that offers precise, predictable steering response and durability for competitive asphalt rally stages

WET TARMAC (ASPHALT) RALLY TYRE PATTERNS



ZWR 1



Specifically designed for wet tarmac conditions. Complies with FIA regulations. Optimised construction for better handling on wet tarmac. Premium tread compound and optimised pattern for water channelling, grip and handling.

ZWI1



Specifically designed for damp tarmac conditions with much wider shoulder blocks. Designed as per FIA norms and regulations. Optimised construction for better handling on damp tarmac surface with premium tread compound for better grip.

ZTW2



Designed for wet/damp tarmac (asphalt) rally/circuit racing. Its 4-rib pattern with improved water channelling enhances the performance when the tarmac is wet.

TRACK DAY TYRES

MRF TYRES



ZTR



Uniquely designed asymmetric pattern for Track Day / Circuit Racing. E4 certified. Specialised compounds give superior handling and traction on both dry and wet surfaces. Also available for hill climbs with an optimised construction and compound.

ZTA



Designed for Asphalt / Tarmac Rally applications. Complies with latest FIA regulations. The specially designed asymmetric pattern, superior construction & compounds deliver better handling and traction in both dry and wet conditions.

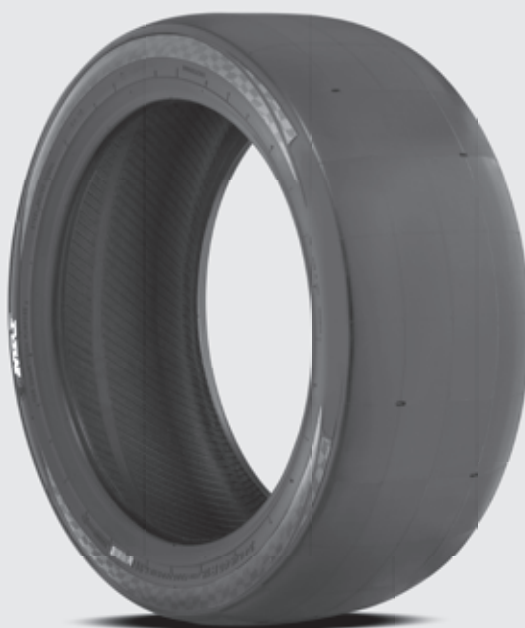
CIRCUIT RACING TYRES



MRF is the first Indian tyre company to design, test and market Formula 3 tyres in the Indian market after extensive testing. MRF slick tyres are designed to meet multiple performance parameters for traction, braking, cornering and confident handling. The compound has been formulated to achieve optimum tyre temperatures quickly and give consistent performance over the whole race distance.

MRF racing tyre compounds are appreciated by many International Drivers for its superior grip and outstanding performance. Global Racing Teams are also potential customers. Compound selections are normally decided by the racing team based on the surface of the track, weather conditions, track temperatures, longevity, car weight and power of the car.

ZTD1



Stiffness of the sidewall is tuned for individual sizes according to the need of the car. A special compound is used to give optimum tyre temperature quickly and a consistent performance throughout the race.

ZTW4



Specifically designed for GT Car and wet/damp (asphalt) circuit racing. Compound optimised for wet grip. Good water channelling on wet tarmac.

ZTW5



Specifically designed for FORMULA-3 racing and wet/damp (asphalt) circuit racing. Compound optimised for wet grip. Good water channelling on wet tarmac.

ZTI2



Designed for dry circuit racing events and track days. This intermediate pattern can be used even when the track is a little damp. This tyre gives consistent performance with sustained grip and superior handling over multiple laps.

PREMIUM SEGMENT

TARMAC RALLY (RADIAL - TUBELESS) - FIA COMPLIANT TYRES

1

SI	Brand / Pattern	Tyre Size	Load index	Speed Rating	Equivalent size (For Reference)	Std Rim Width* (Inch)	Section Width (mm)	Tread Width (mm)	Overall Diameter (mm)	NSD (mm)	Compound	Application**	ECE (E4) Certified	Remarks
A	ZTA Series	195/50 R15	82	V	190/580 R15	6	200 (<8.0")	185	580	5.8	H/M/S/SS	Dry / Damp	Yes	
		195/50 R16	84	W	190/600 R16	6	200 (<8.0")	185	600	5.8	H/M/S/SS	Dry / Damp	Yes	
B	ZTA PLUS A1	235/40 R18	91	W	215/650 R18	8.0	225 (<9.0")	210	645	5.8	H/M/S/SS	Dry / Damp	-	
C	ZTA PLUS	205/45 R17	84	H	195/620 R17	7.0	200 (<8.0")	200	620	5.8	H/M/S/SS	Dry / Damp	Yes	
		235/40 R18	91	W	215/650 R18	8.0	225 (<9.0")	210	645	5.8	H/M/S/SS	Dry / Damp	-	
		195/50 R15	82	V	190/580 R15	6	200 (<8.0")	185	580	5.8	W	Rain	Yes	
		195/50 R16	84	W	190/600 R16	6	200 (<8.0")	185	600	5.8	W	Rain	Yes	
D	ZWR1	205/45 R17	84	W	195/620 R17	7.0	200 (<8.0")	190	620	5.8	W	Rain	Yes	
		235/40 R18	91	W	215/650 R18	8.0	225 (<9.0")	210	645	5.8	W	Rain	Yes	

GRAVEL RALLY (RADIAL - TUBELESS)

2

A	ZG3	175/70 R15	86	S	L/R	5.0	175	165	630	11.2	H/M/S/SS	Medium to Hard (CL-Curve Linear)	Yes	
		195/65 R15	91	S	L/R	6.0	195	165	635	11.2	H/M/S/SS		Yes	
B	ZG4	205/65 R15	94	S	L/R	6.0	205	180	645	11.2	H/M/S/SS	Soft to Hard (CL)	Yes	
	ZDM3	195/65 R15	91	S	L/R	6.0	195	165	635	11.2	H/M/S/SS		Yes	
		195/70 R15	92	S	L/R	6.0	200	170	650	11.2	H/M/S/SS	Loose to Medium Gravel	Yes	
		205/65 R15	94	S	L/R	6.0	205	180	645	11.2	H/M/S/SS		Yes	
D	ZVH1	205/65 R15	94	S	NA	6.0	205	170	640	9.2	M / S	Very Hard Gravel	Yes	

Gravel Rally - ICE Tyres (Radial - Tubeless)

3

A	ZGI	195/70 R15	92	S	L/R	7.0	205	150	650	11.2	H	ICE	-	
	ZGI2	175/75 R15	88	S	NA	5.0	175	135	640	11.2	H	ICE	-	
B		195/70 R15	92	S	NA	7.0	205	150	650	11.2	H	ICE	-	

Historic Rally (Radial - Tubeless)

4

A	ZTA	205/50 R13	82	H	200/530-13	6.5	210	200	530	5.8	H/M/SS	Dry / Damp	Yes	
		225/45 R13	84	H	220/530-13	7.5	230	215	530	5.8	H/M/SS	Dry / Damp	Yes	
		235/40 R17	90	W	230/620 R17	8.5	240	230	620	5.8	H/M/SS	Dry / Damp	Yes	
	ZWR1	205/50 R13	82	H	200/530-13	6.5	215	200	530	5.8	W	Rain	Yes	
		225/45 R13	84	H	220/530-13	7.5	225	215	535	5.8	W	Rain	Yes	
B		235/40 R17	90	W	230/620-17	8.5	240	230	620	5.8	W	Rain	Yes	

NOTE TO CUSTOMERS:

All the above tyre dimensions are in millimeter (mm), rounded off to the nearest values unless otherwise specified. Check the availability of the compound before ordering the same. Customer requirement can be met based on their compound choice. The specified dimensions are design values and are subject to change by the manufacturer at any time and also Speed rating subject to change. Equivalent size given for reference only for the customers to know. How ever, Dual branding may not be available in the sidewall branding in some sizes.

*Std rim width has been specified as above. How ever for the Optimum performance Plus rim size 0.5" or 1.0" can be tried (Section width would increase by 5mm / 10mm respectively).

**Recommended application given in the column. How ever, Customer could decide / select the right compound and right tyre based on their performance feedback / Weather conditions.

CIRCUIT RACING - SLICK / WET / INTERMEDIATE

FORMULA 3 AND FORMULA 4 RACING CARS : SLICK AND WET

1

Sl	Brand / Pattern	Tyre Size	Load index	Speed Rating	Equivalent size (For Reference)	Std Rim Width* (Inch)	Section Width (mm)	Tread Width (mm)	Overall Diameter (mm)	NSD (mm)	Compound	Application**	ECE (E4) Certified	Remarks
A	ZTD1	200/540 R13	84	V	225/45 R13	8.0	225	195	540	2.8	H/M/S/SS	Dry Racing	NA	
		240/570 R13	94	V	275/45 R13	10.0	280	245	575	2.8	H/M/S/SS	Dry Racing	NA	
B	ZTW5	200/540 R13	84	S	225/45 R13	8.0	225	195	540	5.6	W	Wet Racing	YES	
		240/570 R13	94	S	275/45 R13	10.0	280	245	575	5.6	W	Wet Racing	YES	

TOURING CARS: SLICK

2

A	ZTD1	185/60 R13	80	S	160/550 R13	5.5	180	160	555	3.4	H/M/S/SS	Dry Racing	NA	
		185/55 R14	80	S	170/560 R14	6.0	190	170	565	3.4	H/M/S/SS	Dry Racing	NA	
		180/580 R15	82	S	195/50 R15	6.0	190	175	580	3.4	H/M/S/SS	Dry Racing	NA	
		195/580 R15	86	S	205/50 R15	6.5	200	190	585	3.0	H/M/S/SS	Dry Racing	NA	
		200/605 R17	83	S	215/40 R17	7.5	210	200	605	3.4	H/M/S/SS	Dry Racing	NA	
		235/620 R17	89	S	255/35 R17	9.0	255	235	620	3.0	H/M/S/SS	Dry Racing	NA	
		240/640 R18	91	H	235/40 R18	8.5	245	230	645	3.0	H/M/S/SS	Dry Racing	NA	
		280/680 R18	101	Y	285/40 R18	11.0	290	275	680	3.5	H/M/S/SS	Dry Racing	NA	

TOURING CARS: WET

3

A	ZTW4	235/620 R17	89	S	255/35 R17	9.0	255	235	620	5.6	W	Wet Racing	-	
B	ZTW5	195/580 R15	86	S	205/50 R15	6.5	200	190	585	5.6	W	Wet Racing	-	
		200/605 R17	83	S	215/40 R17	7.5	210	200	605	5.6	W	Wet Racing	yes	
		240/640 R18	91	H	235/40 R18	8.5	245	230	645	5.6	W	Wet Racing	-	

TOURING CARS: INTERMEDIATE (FOR DRY AND DAMP)

4

A	ZTI2	185/60 R13	80	H	175/550 R13	5.5	190	175	550	5.8	H/M/S/SS	Dry to Damp	-	
		205/60 R13	86	H	195/580 R13	6.0	210	190	575	5.8	H/M/S/SS	Dry to Damp	-	

NOTE TO CUSTOMERS:

All the above tyre dimensions are in millimeter (mm), rounded off to the nearest values unless other wise specified. Check the availability of the compound before ordering the same. Customer requirement can be met based on their compound choice. The specified dimensions are design values and are subject to change by the manufacturer at any time and also Speed rating subject to change. Equivalent size given for reference only for the customers to know. How ever, Dual branding may not be available in the sidewall branding in some sizes.

*Std rim width has been specified as above. How ever for the Optimum performance Plus rim size 0.5" or 1.0" can be tried (Section width would increase by 5mm / 10mm respectively).

**Recommended application given in the column. How ever, Customer could decide / select the right compound and right tyre based on their performance feedback / Weather conditions.

GRAVEL RALLY (RADIAL - TUBELESS)															
SI	Brand / Pattern	Tyre Size	Load index	Speed Rating	Left / Right	Rim (inch)	Section Width (mm)	Tread Width (mm)	Overall Diameter (mm)	NSD (mm)	Compound	Pattern Application**	ECE (E4) Certified	Remarks	
A	ZG2	205/65 R15	94	S	L/R	6.0	205	185	650	11.2	H/M/S/SS	Soft to Med	Yes	Curvilinear pattern	
		175/70 R15	86	S	L/R	5.0	175	165	630	11.2	H/M/S/SS	Medium to Hard and for Smooth surface	Yes	Curvilinear pattern	
		195/65 R15	91	S	L/R	6.0	195	165	635	11.2	H/M/S/SS		Yes	Curvilinear pattern	
		205/65 R15	94	S	L/R	6.0	205	180	645	11.2	H/M/S/SS		Yes	Curvilinear pattern	
	ZDM2	185/70 R13	86	S	L/R	5.5	190	165	590	11.2	H/M/S/SS	Very Loose / Soft Gravel	Yes		
		195/60 R15	88	S	L/R	6.0	195	170	615	11.2	H/M/S/SS		Yes		
		205/65 R15	94	S	L/R	6.0	205	185	645	11.2	H/M/S/SS		Yes		
		165/80 R13	83	S	L/R	4.5	165	140	595	11.2	H/M/S/SS		Yes		
		175/70 R13	82	S	L/R	5.0	175	150	575	11.2	H/M/S/SS		Yes		
		185/70 R13	86	S	L/R	5.5	185	155	590	11.2	H/M/S/SS		Yes		
D	ZDM3	195/70 R13	89	S	L/R	6.0	200	165	605	11.2	H/M/S/SS	Loose to Medium Gravel	Yes		
		175/65 R14	82	S	L/R	5.0	175	150	585	11.2	H/M/S/SS		Yes		
		185/60 R14	82	S	L/R	5.5	185	150	580	11.2	H/M/S/SS		Yes		
		185/65 R14	86	S	L/R	5.5	185	155	595	11.2	H/M/S/SS		Yes		
		175/70 R15	86	S	L/R	5.0	175	150	625	11.2	H/M/S/SS		Yes		
		185/65 R15	88	S	L/R	5.5	185	155	620	11.2	H/M/S/SS		Yes		
		195/65 R15	91	S	L/R	6.0	195	165	635	11.2	H/M/S/SS		Yes		
		195/70 R15	92	S	L/R	6.0	200	170	650	11.2	H/M/S/SS		Yes		
		205/65 R15	94	S	L/R	6.0	205	180	645	11.2	H/M/S/SS		Yes		
		205/65 R15	94	S	NA	6.0	205	135	645	11.6	H/M/S		Wet and Mud	Yes	
F	ZGA1	225/60 R17	99	S	NA	6.5	225	210	705	11.2	H/M/S/SS	Soft to Medium	Yes		
G	ZGM	175/70 R13	82	S	NA	5.0	180	150	570	11.2	H/M/S/SS	Soft to Medium	Yes		
H	ZVH1	185/60 R14	82	S	NA	5.5	185	150	575	7.0	M / S	Very Hard Gravel / Pebbles surface	Yes		
		185/65 R15	88	S	NA	5.5	185	150	620	9.2	M / S		Yes		
		195/65 R15	91	S	NA	6.0	200	165	630	7.0	M / S		Yes		
		205/65 R15	94	S	NA	6.0	205	170	640	9.2	M / S		Yes		
OFF-ROAD / CROSS COUNTRY/ MUD CROSS (RADIAL - TUBELESS)															
SI	Pattern	Tyre Size	Load index	Speed Rating	Equivalent size	Rim (inch)	Section Width (mm)	Tread Width (mm)	Overall Diameter (mm)	NSD (mm)	Compound	Application**	ECE (E4) Certified	Remarks	
A	Wanderer O/R	255/80 R15	112	P	31 x 10 R15	7.0	255	215	790	14.5	H/M	Off roading	Yes	Yes	
		235/70 R16	105	P	29 x 9.5 R16	6.5	235	195	740	14.5	H/M	Off roading	Yes	Yes	
		235/80 R16	109	Q	31 x 9.5 R16	6.5	235	200	790	14.5	H/M	Off roading	Yes	Yes	
B	Wanderer C/C	185/80 R16	102	S	28 x 7.5 R16	5.0	190	160	700	11.8	H/M	Cross country	Yes		
		205/80 R16	104	H	29 x 8.0 R16	5.5	205	175	735	11.8	H/M	Cross country	Yes		
C	Wanderer M/C	185/80 R16	102	S	28 x 7.5 R16	5.0	190	160	700	15.6	H/M	Mud Cross			
		205/80 R16	104	H	29 x 8.0 R16	5.5	205	175	735	15.6	H/M	Mud Cross			
NOTE TO CUSTOMERS: All the above tyre dimensions are in millimeter (mm), rounded off to the nearest values unless other wise specified. Check the availability of the compound before ordering the same. Customer requirement can be met based on their compound choice. The specified dimensions are design values and are subject to change by the manufacturer at any time and also Speed rating subject to change. Equivalent size given for reference only for the customers to know. How ever, Dual branding may not be available in the sidewall branding in some sizes. *Std rim width has been specified as above. How ever for the Optimum performance Plus rim size 0.5" or 1.0" can be tried (Section width would increase by 5mm / 10mm respectively). **Recommended application given in the column. How ever, Customer could decide / select the right compound and right tyre based on their performance feedback / Weather conditions.															

TRACK DAY - RACING (RADIAL - TUBELESS)														
Sl	Brand / Pattern	Tyre Size	Load index	Speed Rating	Equivalent size (For Reference)	Rim (inch)	Section Width (mm)	Tread Width (mm)	Overall Diameter (mm)	NSD (mm)	Compound	Application **	ECE (E4) Certified	Remarks
A	ZTR Series (TRACK DAY)	185/60 R13	80	H	185/550 R13	5.5	190	180	550	5.8	H/M/S/SS	Dry / Damp	Yes	
		205/50 R13	82	H	200/530 R13	6.5	210	200	530	5.8	H/M/S/SS	Dry / Damp	Yes	
		225/45 R13	84	H	220/530 R13	7.5	230	215	530	5.8	H/M/S/SS	Dry / Damp	Yes	
		185/55 R14	80	V	185/560 R14	6.0	195	185	560	5.8	H/M/S/SS	Dry / Damp	Yes	
		195/50 R15	82	V	190/580 R15	6.0	195	185	580	5.8	H/M/S/SS	Dry / Damp	Yes	
		225/45 R15	87	W	215/585 R15	7.5	225	215	585	5.8	H/M/S/SS	Dry / Damp	Yes	
		195/50 R16	84	W	190/600 R16	6.0	195	185	600	5.8	H/M/S/SS	Dry / Damp	Yes	
		225/45 R16	89	W	215/610 R16	7.5	225	215	610	5.8	H/M/S/SS	Dry / Damp	Yes	
		205/45 R17	84	W	195/620 R17	7.0	200	190	620	5.8	H/M/S/SS	Dry / Damp	Yes	
		215/45 R17	87	W	210/625 R17	7.0	220	215	625	5.8	H/M/S/SS	Dry / Damp	Yes	
		225/45 R17	91	W	215/635 R17	7.5	225	215	635	5.8	H/M/S/SS	Dry / Damp	Yes	
		235/40 R17	90	W	230/620 R17	8.5	240	230	620	5.8	H/M/S/SS	Dry / Damp	Yes	
		235/45 R17	94	W	230/645 R17	8.0	240	230	645	5.8	H/M/S/SS	Dry / Damp	Yes	
		235/40 R18	91	W	230/645 R18	8.5	235	210	645	5.8	H/M/S/SS	Dry / Damp	Yes	
		245/40 R18	93	W	230/655 R18	8.5	240	235	650	5.8	H/M/S/SS	Dry / Damp	Yes	
		265/35 R18	93	W	260/640 R18	9.5	270	255	645	5.8	H/M/S/SS	Dry / Damp	Yes	
		285/30 R18	93	Y	280/630 R18	10	290	280	630	5.8	H/M/S/SS	Dry / Damp	Yes	
		295/30 R18	94	Y	290/635 R18	10.5	295	290	635	5.8	H/M/S/SS	Dry / Damp	Yes	
		235/35 R19	87	Y	230/645 R19	8.5	235	230	645	5.8	H/M/S/SS	Dry / Damp	Yes	
		265/35 R19	94	Y	260/670 R19	9.5	270	255	670	4.8	H/M/S/SS	Dry / Damp	-	
		295/30 R19	96	Y	290/660 R19	10.5	300	285	660	4.8	H/M/S/SS	Dry / Damp	-	
2	ROAD/ TRACK SIZES (RADIAL - TUBELESS) - R117 CERTIFIED													
A	ZTR Series (R/T)	205/50 R13	82	H	200/530 R13	6.5	210	200	530	5.8	-	Road / Track	Yes	
		225/45 R13	84	H	220/530 R13	7.5	230	215	530	5.8	-	Road / Track	Yes	
		195/50 R15	82	V	190/580 R15	6.0	195	185	580	5.8	-	Road / Track	Yes	
		225/45 R15	87	W	215/585 R15	7.5	225	215	585	5.8	-	Road / Track	Yes	
		225/45 R16	89	W	215/610 R16	7.5	225	215	610	5.8	-	Road / Track	Yes	
		225/45 R17	91	W	215/635 R17	7.5	225	215	635	5.8	-	Road / Track	Yes	
		235/45 R17	94	W	230/645 R17	8.0	240	230	645	5.8	-	Road / Track	Yes	
		235/40 R18	91	W	230/645 R18	8.5	235	210	645	5.8	-	Road / Track	Yes	
		245/40 R18	93	W	230/655 R18	8.5	240	235	650	5.8	-	Road / Track	Yes	
		265/35 R18	93	W	260/640 R18	9.5	270	255	645	5.8	-	Road / Track	Yes	
		285/30 R18	93	Y	280/630 R18	10	290	280	630	5.8	-	Road / Track	Yes	
		295/30 R18	94	Y	290/635 R18	10.5	295	290	635	5.8	-	Road / Track	Yes	
235/35 R19	87	Y	230/645 R19	8.5	235	230	645	5.8	-	Road / Track	Yes			
3	PULSAR / EXCEL (RADIAL - TUBELESS)													
A	ZTC	195/50 R15	82	V	190/580 R15	6.0	195	185	580	5.8	M/S	Racing	Yes	

NOTE TO CUSTOMERS:

All the above tyre dimensions are in millimeter [mm], rounded off to the nearest values unless other wise specified. Check the availability of the compound before ordering the same. Customer requirement can be met based on their compound choice. The specified dimensions are design values and are subject to change by the manufacturer at any time and also Speed rating subject to change. Equivalent size given for reference only for the customers to know. How ever, Dual branding may not be available in the sidewall branding in some sizes.

*Sid rim width has been specified as above. How ever for the Optimum performance Plus rim size 0.5" or 1.0" can be tried [Section width would increase by 5mm / 10mm respectively].

**Recommended application given in the column. How ever, Customer could decide / select the right compound and right tyre based on their performance feedback / Weather conditions.

NOTE TO CUSTOMERS:

All the above tyre dimensions are in millimeter (mm), rounded off to the nearest values unless other wise specified. Check the availability of the compound before ordering the same. Customer requirement can be met based on their compound choice. The specified dimensions are design values and are subject to change by the manufacturer at any time and also Speed rating subject to change. Equivalent size given for reference only for the customers to know. How ever, Dual branding may not be available in the sidewall branding in some sizes.

*Std rim width has been specified as above. How ever for the Optimum performance Plus rim size 0.5" or 1.0" can be tried (Section width would increase by 5mm / 10mm respectively).

**Recommended application given in the column. How ever, Customer could decide / select the right compound and right tyre based on their performance feedback / Weather conditions.

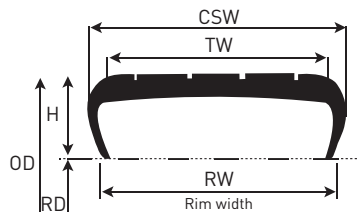
TARMAC RALLY (RADIAL - TUBELESS)																
SI	Brand / Pattern	Tyre Size	Load index	Speed Rating	Equivalent size (For Reference)	Rim (inch)	Section Width (mm)	Tread Width (mm)	Overall Diameter (mm)	NSD (mm)	Compound	Application **	ECE (E4) Certified	Remarks		
A	ZTA Series	195/50 R15	82	V	190/580 R15	6	200 (<8.0")	185	580	5.8	H/M/S/SS	Dry / Damp	Yes			
		195/50 R16	84	W	190/600 R16	6	200 (<8.0")	185	600	5.8	H/M/S/SS	Dry / Damp	Yes			
		205/45 R17	84	W	195/620 R17	7.0	200 (<8.0")	190	620	5.8	H/M/S/SS	Dry / Damp	Yes			
		235/40 R18	91	W	215/650 R18	8.0	225 (<9.0")	210	645	5.8	H/M/S/SS	Dry / Damp	Yes			
		195/50 R15	82	V	190/580 R15	6	200 (<8.0")	185	580	5.8	W	Rain	Yes			
		195/50 R16	84	W	190/600 R16	6	200 (<8.0")	185	600	5.8	W	Rain	Yes			
		205/45 R17	84	W	195/620 R17	7.0	200 (<8.0")	190	620	5.8	W	Rain	Yes			
		235/40 R18	91	W	215/650 R18	8.0	225 (<9.0")	210	645	5.8	W	Rain	Yes			
		TARMAC RALLY (RADIAL - TUBELESS) - FIA COMPLIANT TYRES														
		TARMAC RALLY (RADIAL - TUBELESS) - OTHERS														
A	ZTA	185/60 R13	80	H	185/550 R13	5.5	190	180	550	5.8	H/M/S/SS	Dry / Damp	Yes			
		205/50 R13	82	H	200/530-13	6.5	210	200	530	5.8	H/M/S/SS	Dry / Damp	Yes			
		225/45 R13	84	H	220/530-13	7.5	230	215	530	5.8	H/M/S/SS	Dry / Damp	Yes			
		185/55 R14	80	V	185/560 R14	6	195	185	560	5.8	H/M/S/SS	Dry / Damp	Yes			
		225/45 R15	87	W	215/585 R15	7.5	225	215	585	5.8	H/M/S/SS	Dry / Damp	Yes			
		225/45 R16	89	W	215/610 R16	7.5	225	215	610	5.8	H/M/S/SS	Dry / Damp	Yes			
		215/45 R17	87	W	210/625 R17	7.0	220	210	625	5.8	H/M/S/SS	Dry / Damp	Yes			
		225/45 R17	91	W	215/635 R17	7.5	225	215	635	5.8	H/M/S/SS	Dry / Damp	Yes			
		235/40 R17	90	W	230/620 R17	8.5	240	230	620	5.8	H/M/S/SS	Dry / Damp	Yes			
		235/45 R17	94	W	220/645 R17	8.0	240	230	645	5.8	H/M/S/SS	Dry / Damp	Yes			
B	ZWR1	245/40 R18	93	W	230/655 R18	8.5	240	235	650	5.8	H/M/S/SS	Dry / Damp	Yes			
		265/35 R18	93	W	260/640 R18	9.5	270	255	645	5.8	H/M/S/SS	Dry / Damp	Yes			
		285/30 R18	93	Y	280/630 R18	10	290	280	630	5.8	H/M/S/SS	Dry / Damp	Yes			
		295/30 R18	94	Y	280/635 R18	10.5	295	290	635	5.8	H/M/S/SS	Dry / Damp	Yes			
		235/35 R19	87	Y	230/645 R19	8.5	235	230	645	5.8	H/M/S/SS	Dry / Damp	Yes			
		185/60 R13	80	H	185/550 R13	5.5	190	180	550	5.8	W	Rain	Yes			
		185/55 R14	80	V	185/560 R14	6	195	185	560	5.8	W	Rain	Yes			
		205/50 R13	82	H	200/530-13	6.5	215	200	530	5.8	W	Rain	Yes			
		225/45 R13	84	H	220/530-13	7.5	225	215	535	5.8	W	Rain	Yes			
		225/45 R15	87	W	215/585 R15	7.5	225	215	585	5.8	W	Rain	Yes			
C	ZWI1	235/40 R17	90	W	230/620-17	8.5	240	230	620	5.8	W	Rain	Yes			
		235/40 R18	91	W	215/650 R18	8.0	225 (<9.0")	210	645	5.8	W	Damp / Rain	Yes			
D	ZTW2	185/55 R14	79	S	170/560 R14	5.5	190	175	555	5.6	H/M/S/SS	Dry / Damp	Yes			
HISTORIC RALLY (NON-PREMIUM) (RADIAL - TUBELESS)																
A	ZTA	205/50 R13	82	H	200/530-13	6.5	210	200	530	5.8	M/S	Dry / Damp	Yes			
		225/45 R13	84	H	220/530-13	7.5	230	215	530	5.8	M/S	Dry / Damp	Yes			
		235/40 R17	90	W	230/620 R17	8.5	240	230	620	5.8	M/S	Dry / Damp	Yes			
B	ZWR1	205/50 R13	82	H	200/530-13	6.5	215	200	530	5.8	W	Rain	Yes			
		225/45 R13	84	H	220/530-13	7.5	225	215	535	5.8	W	Rain	Yes			
		235/40 R17	90	W	230/620-17	8.5	240	230	620	5.8	W	Rain	Yes			
NOTE TO CUSTOMERS: All the above tyre dimensions are in millimeter (mm), rounded off to the nearest values unless other wise specified. Check the availability of the compound before ordering the same. Customer requirement can be met based on their compound choice. The specified dimensions are design values and are subject to change by the manufacturer at any time and also Speed rating subject to change. Equivalent size given for reference only for the customers to know. How ever, Dual branding may not be available in the sidewall branding in some sizes. *Sid rim width has been specified as above. How ever for the Optimum performance Plus rim size 0.5" or 1.0" can be tried (Section width would increase by 5mm / 10mm respectively). **Recommended application given in the column. How ever, Customer could decide / select the right compound and right tyre based on their performance feedback / Weather conditions.																

TECHNICAL INFORMATION

TYRE SIZING / MARKING OF RACING AND RALLY TYRES

Tyre Identification

The marking on the side of the tyre tells us the basic size of the tyre, the rim diameter and the width of the rim. We will illustrate how to read the different types of markings that may appear on the side of rally/racing tyres.



CSW	OD	RD	
Nominal cross section width expressed in mm	Nominal external diameter expressed in mm	Nominal rim diameter expressed in inches	
↓	↓	↓	
240	640	18	
CSW	Aspect Ratio (AR)	R	RD
Nominal cross section width expressed in mm	The ratio between the section height and the nominal section width (H/CSW) in mm	Radial construction	Nominal rim diameter expressed in inches
↓	↓	↓	↓
205	65	R	15

Rally Tyre Sizing – Eg. 205/65 R15

where,

205 is the CSW of the tyre in mm

65 is the aspect ratio

R – Radial construction

15 – Nominal rim diameter in inches

Racing Tyre Sizing (Classification 1) – Eg. 200/540-13

where,

200 is the TW of the tyre in mm

540 is the OD of the tyre in mm

13 – Nominal rim diameter in inches

Racing Tyre Sizing (Classification 2) – Eg. 240/640 -18

where,

240 is the CSW of the tyre in mm

640 is the OD of the tyre in mm

18 – Nominal rim diameter in inches

USER INFORMATION

TYRE STORAGE: Tyres should be stored in a cool, dry and dark place away from direct sunlight (Suggested storage temperature: 25°C ± 5°C). Avoid storing tyres in an area which is exposed to high temperatures or wet, oily or greasy conditions.

RIMS: Recommended width of the wheel as specified to be used for optimum performance. However, from the original specified rim width ± 0.5" can also be used. ETRTO/JATMA standards can be referred for the correct rim width.

TYRE MOUNTING AND REMOVAL: Mounting/demounting should be done by trained personnel using a suitable mounting machine. Prior to fitment, inspect the rim and tyres for any external damage. Tyres have to be mounted according to the direction of rotation specified on the sidewall. The rim seating area and tyre beads should be lubricated. Recommended tyre pressure to be followed. Check for the proper seating of the beads and tyre centring with reference to RCR (Rim Centre Ring) after inflation. Balancing of the tyres must be done.

LEFT & RIGHT: Directional pattern tyres must be used on the correct side. Left or Right and Outside marking on the sidewall must be followed for best performance.

HAND-CUT TREAD PATTERN: Groove width between the pattern blocks can be widened if required. However, hand cutting the buttons could alter the performance. Hence a careful decision is to be made based on the terrain

conditions.

Gravel Rally - Compound Selection Guide																		
Compound			Track Surface			Conditions			Track Temperature °C									
Hardness	Working Temp.	Mud/Slush	Soft/Sand	Medium/Packed	Hard/Rocky	Wet	Damp	Dry	-5	0	5	10	15	25	30	35	40	
Hard (H)	70 - 120°C																	
Medium (M)	60 - 110°C																	
Soft (S)	25 - 80°C																	
Wet (W)	20 - 90°C																	

Tarmac (Asphalt)/Circuit Racing - Compound Selection Guide																
Compound		Track Surface			Conditions			Track Temperature °C								
Hardness	Working Temp.	Smooth	Medium	Rough	Wet	Damp	Dry	-5	0	5	10	20	25	30	35	40
Hard (H)	80 - 130°C															
Medium (M)	50 - 110°C															
Soft (S)	40 - 90°C															
Super Soft (SS)	25 - 80°C															
Wet (W)	20 - 90°C															

COMPOUND HARDNESS

MARKING: Rally tyre and racing tyre compounds are designed for different applications, usage, weather conditions and track temperatures. Compound hardness is identified by H (Hard compound), M (Medium compound), S (Soft compound), SS (Super Soft compound) and W (Wet compound).

RECOMMENDATIONS FOR CORRECT MAINTENANCE AND USE OF TYRES IN COLD ENVIRONMENTS

MRF Motorsport tyres contain high performance rubber compounds and require special treatment when exposed to low temperatures (below 50°F / 10°C). At these temperatures the tyre has reduced flexibility which can result in cracking of the compound if the tyre is not handled correctly.

IN ORDER TO AVOID DAMAGE TO THE COMPOUND AT LOW TEMPERATURES, PLEASE FOLLOW THE INSTRUCTIONS BELOW:

1. Before fitting on a wheel rim the tyres should be stored in a controlled environment at a minimum temperature of 68°F / 20°C for at least 24 hours.
2. These tyres should always be stored at a temperature above 50°F / 10°C.
3. During prolonged periods of non-use the tyres should be removed from the vehicle. If stored / fitted on the wheel air pressure must be reduced by 50%. Do not move the vehicle after reducing the air pressure, as this may cause the compound to crack.

WARNING

ALWAYS mount tyres only on rims which are undamaged, smooth and clean.

ALWAYS be sure that the tyre bead diameter is the same as the nominal rim diameter on which it will be mounted. The beads cannot be forced out against rim flanges by using more air pressure because this will break the beads and the tyre will explode with force sufficient to cause serious injury or death.

NEVER force the bead(s) over the rim flange or use sharp-edged or improper tools that could damage the bead(s) or other parts of the tyre. When passing tyre beads over the rim flange, ensure as much as possible of the bead already over the rim flange, is sitting in the wheel well.

ALWAYS inflate the tyre without the valve core inserted into the valve stem. Inflation air should be as dry as possible. ALWAYS inflate tyres in a safety cage or with another restraint device. NEVER inflate beyond 40 psi to seat the beads during tyre fitment.

NEVER modify any portion of a MRF racing or competition tyre, such as (but not limited to) by chemically treating the tread compound ("soaking" or "softening" the tread). Any modification could result in premature or catastrophic tyre failure leading to personal injury or death.

EXCLUSION OF WARRANTY

MRF Limited makes NO WARRANTIES WHATSOEVER, EXPRESS, IMPLIED OR STATUTORY, INCLUDING WITHOUT LIMITATION ANY IMPLIED WARRANTIES OF MERCHANTABILITY OF FITNESS FOR A PARTICULAR PURPOSE for its racing or competition tyres. MRF EXPRESSLY DISCLAIMS ALL SUCH WARRANTIES. In no event shall MRF be liable for any kind of general, special, direct, indirect or consequential damages including loss of profits, personal injury etc. arising from the use of its racing or competition tyres. All MRF racing and competition tyres are sold AS IS WHERE IS. Purchasers and users ASSUME ALL RISKS associated with the use of MRF racing and competition tyres.

NEVER USE RACING OR COMPETITION TYRES NOT BEARING THE "E" MARK (OR ANY OTHER LEGAL REQUIREMENT IN THE COUNTRY OF USE) ON PUBLIC STREETS OR HIGHWAYS: IT IS ILLEGAL AND DANGEROUS. NEVER USE A RACING OR COMPETITION TYRE ON PUBLIC STREETS OR HIGHWAYS WHICH HAS BRANDING ON ITS SIDEWALL "Not for Highway Use" OR "For Competition Purpose": IT IS ILLEGAL AND DANGEROUS. MRF RACING and COMPETITION TYRES WHICH ARE NOT MEANT FOR ORDINARY ROAD USE AND DO NOT BEAR AN "E" MARK ARE DESIGNED AND COMPOUNDED EXCLUSIVELY FOR COMPETITION USE ONLY. These tyres are NOT tested, labelled or intended to meet FMVSS 109/119 or ECE 30/75.

Sellers, purchasers and users of MRF racing and competition tyres agree to defend, indemnify and hold harmless MRF Ltd., its officials and business associates, from every type of risk, loss, injury, damage, legal proceedings of whatever kind of nature, which MRF Ltd. may incur or suffer as a result of the improper sale, installation or use of MRF racing and competition tyres.

Any dispute with regard to this warranty/exclusion of warranty statement and claims if any, against the products shall be exclusively governed by the laws of the Republic of India, and subject to the exclusive jurisdiction of the courts in Chennai, India.

AVAILABILITY: All sizes are made to specific order. You are requested to check on the availability of the tyres.



MRF **MOTORSPORT TYRES** **THE WINNING EDGE**

MRF, India's No.1 tyre manufacturer is associated with all forms of motorsport for over four decades, manufacturing a world-class range of tyres for rallying, racing, motocross and go karts.

Team MRF is the most successful Indian tyre manufacturer in rallying, winning 9 Asia Pacific Rally Championship (APRC) titles and 3 European Rally Championship (ERC) titles.



The Tyres we race are the Tyres you buy



Visit us at www.mrfmotorsports.com. For enquiries, please contact write2us@mrftyres.com or scan the QR code.

[f /MRFRacingOfficial](https://www.facebook.com/MRFRacingOfficial) | [X /MRF_Racing](https://www.x.com/MRF_Racing) | [i /MRF_Racing](https://www.instagram.com/MRF_Racing)





The Winning Edge



*The tyres we race are
the tyres you buy*



MRF

MRF Limited, Regd. Office: 114 Greaves Road, Chennai - 600 006. Tel: 91-44-28292777, Fax: 91-44-28294154

For further assistance, contact: write2us@mrftyres.com | www.mrftyres.com

[f/mrfcorporate](https://www.facebook.com/mrfcorporate) | [X/MRFWorldwide](https://www.x.com/MRFWorldwide) | [ig/mrfcorporate](https://www.instagram.com/mrfcorporate)

INTERNATIONAL BUSINESS DIVISION: Email: mrfexpo@mrftyres.com

Visit us at www.mrfmotorsports.com

[f/MRFRacingOfficial](https://www.facebook.com/MRFRacingOfficial) | [X/MRF-Racing](https://www.x.com/MRF-Racing) | [ig/MRF-Racing](https://www.instagram.com/MRF-Racing)

